

NAUTOR'S
SWAN

SWAN 80



The Yacht is an 80 foot Swan maxi yacht built by Nautor of Finland. It combines the performance of a world-class racing yacht with a degree of comfort and luxury normally only found in much larger boats. Her rig represents the cutting edge of racing yacht technology, providing unparalleled manoeuvrability and ease of handling.

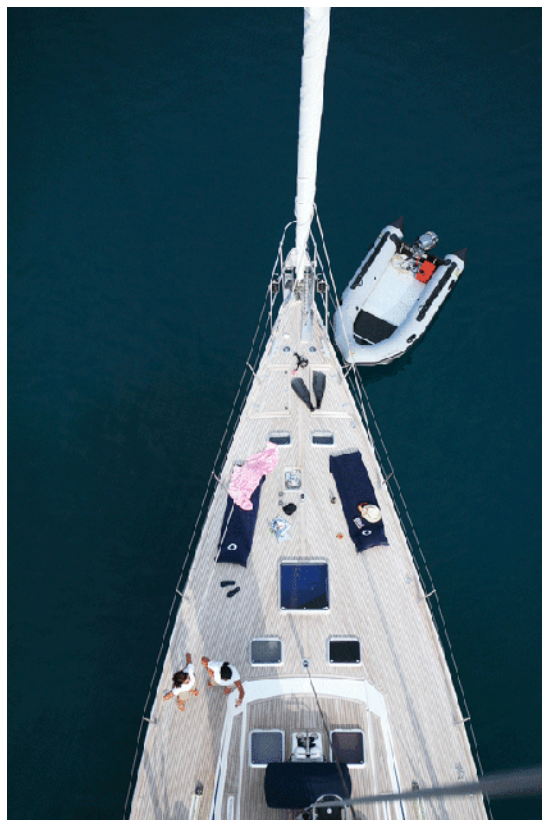




The graceful hull is very fast, yet designed to have space for ample stores for long voyages without significant loss of performance. Experience the exhilaration and tranquillity of helming a maxi yacht under 4,215 square feet of canvas from the aft cockpit, which provides full control of all sailing functions and comfortable sitting for eight, or take off to a secluded beach in the inflatable tender.



The hatches, fittings, and genoa tracks are flush into the teak deck, so that the spacious deck areas can be used for entertainment in the shade of a Bimini when riding at anchor, or for sunbathing while cruising under power at up to 10 knots with the 225 hp engine.





When not under sail, the forward cockpit converts to a relaxed dining area with hi-fi audio. The experience and skill of the crew, together with the most advanced and reliable rigging and navigation equipment, guarantee your safety and comfort at all times.



Below deck the accent is on space and comfort, with a main salon that is a full-beam 19 foot broad, with luxurious leather settees and armchairs, and audio/video entertainment. All areas are fully air conditioned, with independent cabin controls.



The dining area, with seating for eight, provides an elegant ambience either for formal meals or romantic, candle-lit intimacy. Five-star cuisine from the fully enclosed galley and attentive service from the crew combine to make dining on the Yacht a memorable experience.



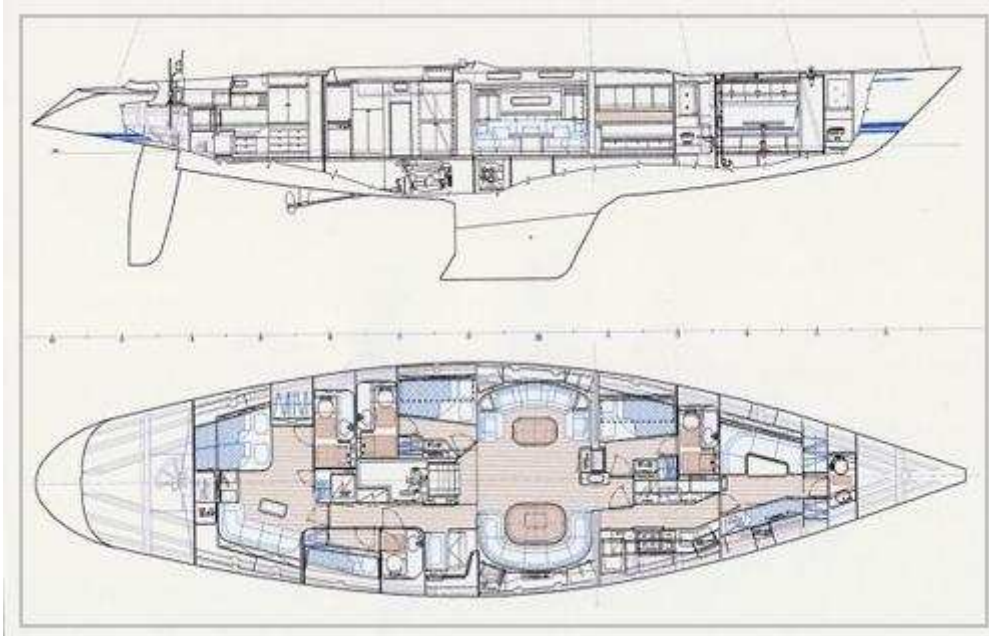
The Master Cabin, like all the interior spaces is finished in polished teak and fully air-conditioned, and features a queen-size bed, a lounge area with writing desk and en-suite bathroom.

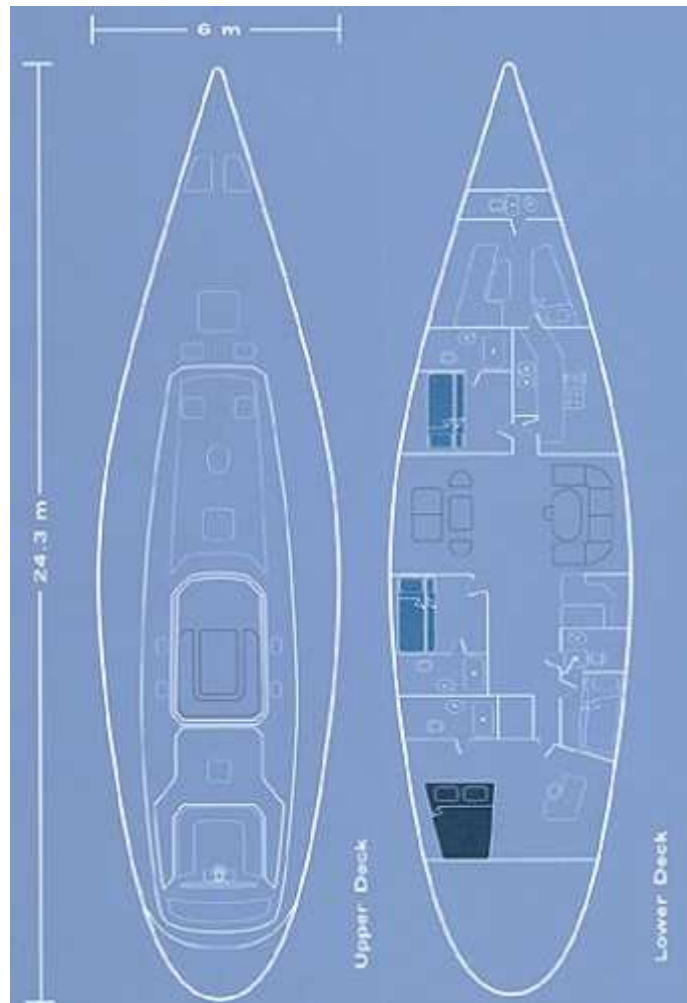




The two Twin Cabins are configurable as single or twin bunks. Both cabins have en-suite bathroom and independent air-conditioning.







As you would expect in a yacht of this quality, state-of-the-art communication systems are fitted, to keep you in touch with the world you have left behind. Unlike most yachts of her size, the crew of five have their own self-contained quarters in the bow, with separate deck access.

<p>Nautor's Swan 80 Designer German Frers Built Finland 1995, GRP</p> <p>LOA 24,30m (80ft) Beam 6m (19,7ft) Draught 3,40m (11,5ft) Sail area 392 m² Gennaker 425 m²</p> <p>Cruising speed 9/10 knots Engine 225hp Perkins Generators 20kw & 12kw Voltage 24 & 220V Water capacity 1400 lt Fuel capacity 1500 lt Fuel consumption 40lt/hour</p>	<p>Sailing area: East Med Home port Athens</p> <p>Accommodation: 6 guest in one master cabin and 2 twin. All air-conditioned with en- suite facilities</p> <p>Crew of 4 in separate compartments. Captain: Argyris Kaltsounis</p> <p>Equipment: Radar, VHF DSC, Navtex, Autopilot, Epirb, Hydraulic winches, air- conditioned, watermaker</p>
--	--

	<p>Recreation: TV, home cinema, DVD, CD, PC, internet connection.</p> <p>Water toys: Rib with outboard motor, snorkeling, fishing equipment, tubes</p>
<p>Daily rate: July, August Euro 3.700 Euro, low season Euro 3.400 Euro. Plus expenses.</p>	

Neem voor meer informatie contact met ons op.